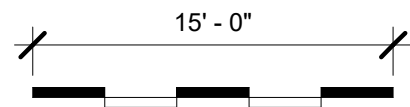


UNIT BEING SHOWN AS TYPE A  
 ACCESSIBILITY UNIT WITH  
 OPTIONAL FEATURES



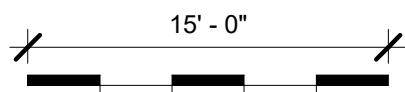
1 1st - 3rd FLOORS, BUILDING 2 - NORTH UNIT - MINNEHAHA

2,562 SQ. FT.

MK.1 SCALE: 1/8" = 1'-0"

Project #	2019-312
Drawn By:	DD
Date:	04/05/19

**MK.1**



EDINA FLATS  
 6142 KELLOGG AVE  
 EDINA, MN 55424

NewStudio|architecture  
 mn 2303 Wycliff Street, Saint Paul, MN 55114  
 p. 651.207.5527 f. 651.207.8247

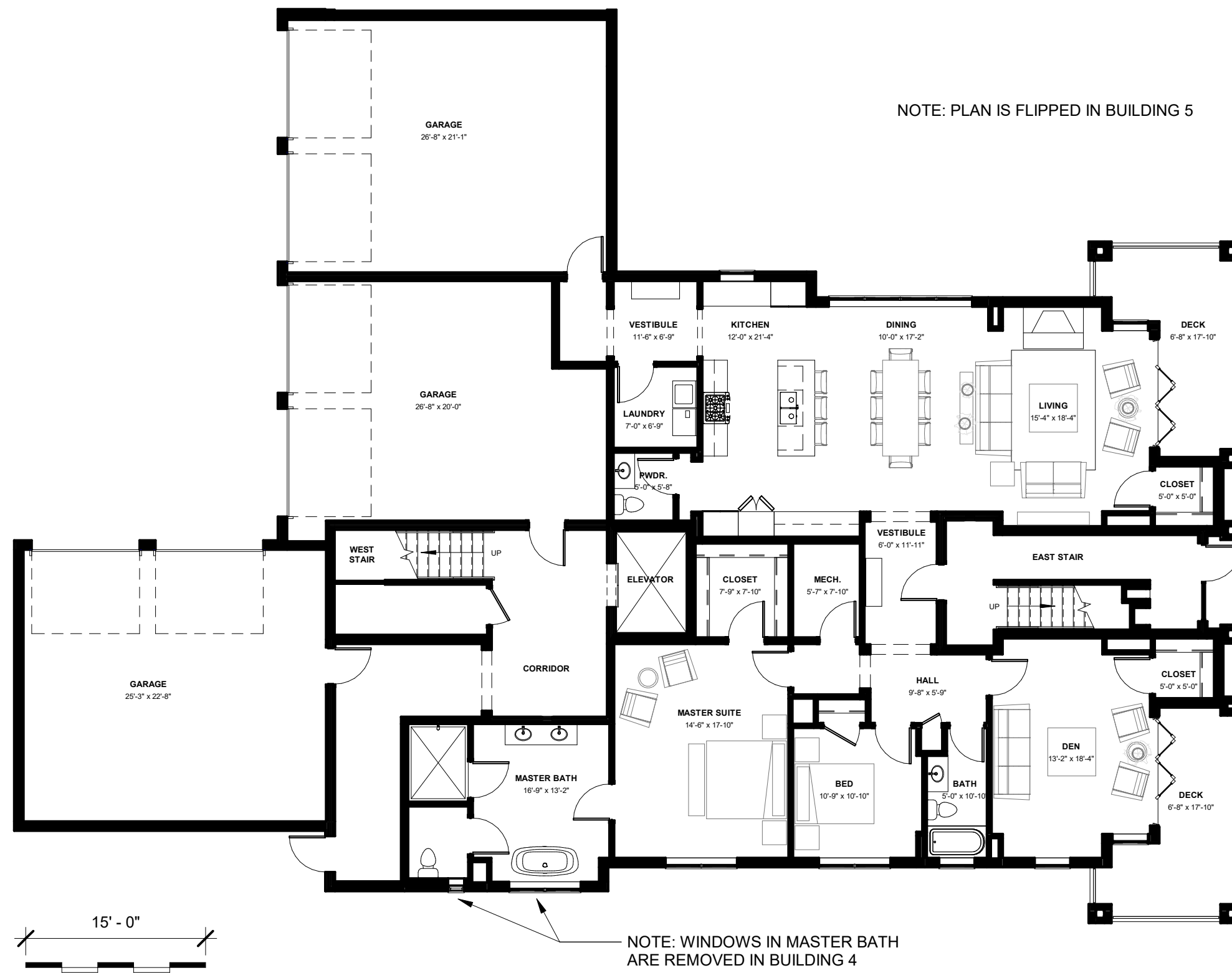
1 1st - 3rd FLOORS, BUILDING 2 - SOUTH UNIT - CORNELIA

2,525 SQ. FT.

MK.2 SCALE: 1/8" = 1'-0"

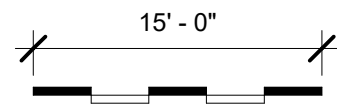
Project #	2019-312
Drawn By:	DD
Date:	04/05/19

MK.2



NOTE: PLAN IS FLIPPED IN BUILDING 5

NOTE: WINDOWS IN MASTER BATH ARE REMOVED IN BUILDING 4



**1 1st FLOOR, BUILDING 3, 4 & 5 - CONCORD**

2,305 SQ. FT.

MK.3 SCALE: 1" = 10'-0"

EDINA FLATS  
6128 KELLOGG AVE  
EDINA, MN 55424

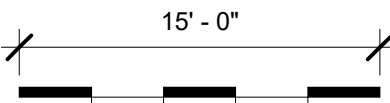
NewStudio|architecture  
mn 2303 Wycliff Street, Saint Paul, MN 55114  
p. 651.207.5527 f. 651.207.8247

Project #	2019-312
Drawn By:	DD
Date:	04/05/19
<b>MK.3</b>	

NOTE: PLAN IS DIFFERENT IN BUILDNG 5



EDINA FLATS  
6128 KELLOGG AVE  
EDINA, MN 55424



1 2nd FLOOR, BUILDING 3 & 4 - NORTH UNIT - ARDEN

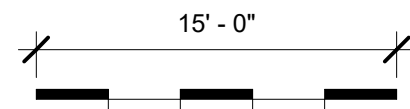
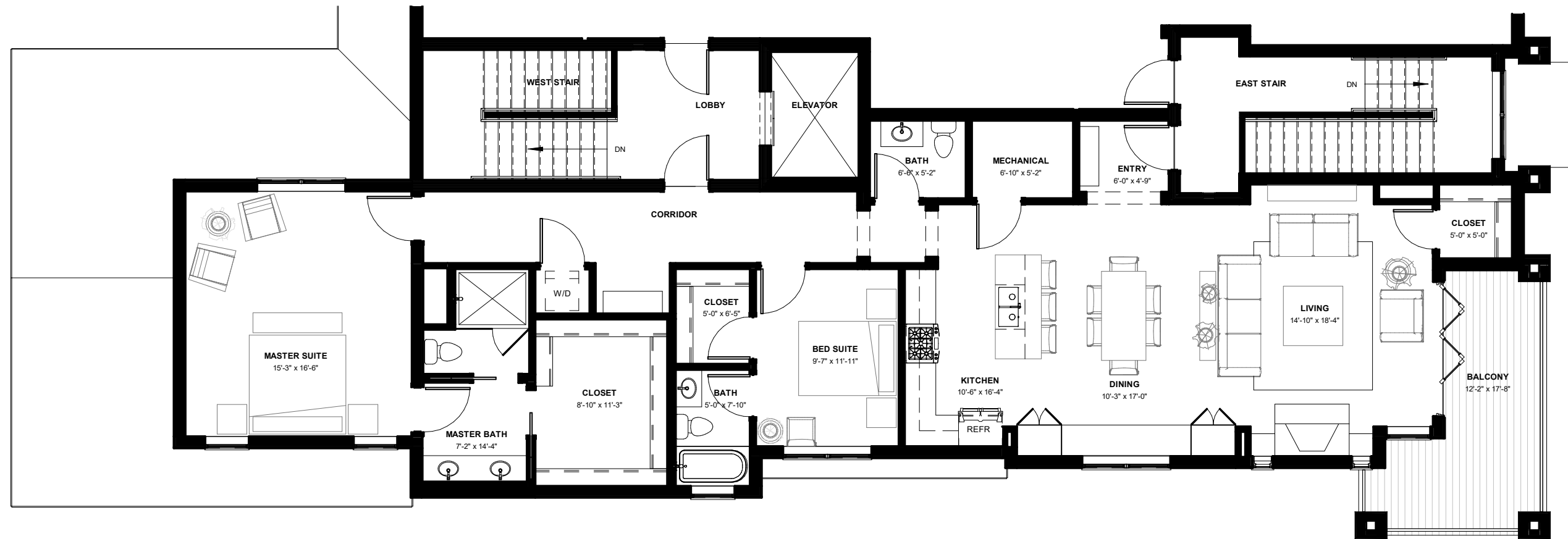
1,492 SQ. FT.

MK.4 SCALE: 1/8" = 1'-0"

NewStudio|architecture  
mn 2303 Wycliff Street, Saint Paul, MN 55114  
p. 651.207.5527 f. 651.207.8247

Project # 2019-312  
Drawn By: DD  
Date: 04/05/19

**MK.4**



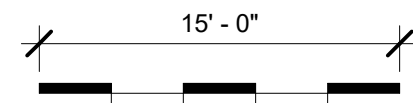
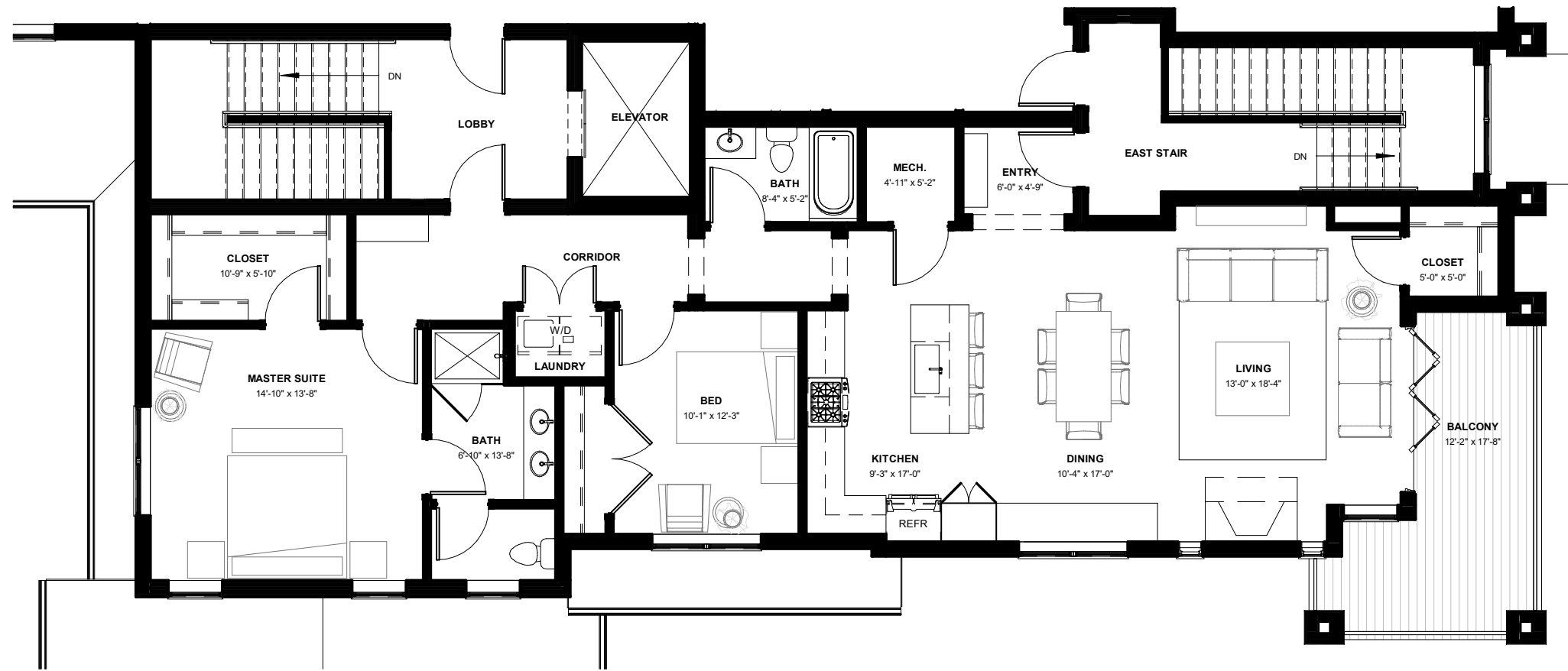
NOTE: PLAN IS FLIPPED IN BUILDING 5  
 SO THAT THIS IS THE NORTH UNIT

1 2nd FLOOR, BUILDING 3, 4 & 5 - SOUTH UNIT - PAMELA

1,766 SQ. FT.

MK.5 SCALE: 1/8" = 1'-0"

Project #	2019-312
Drawn By:	DD
Date:	04/05/19
<b>MK.5</b>	



UNIT BEING SHOWN AS TYPE A  
ACCESSIBILITY UNIT

1 2nd FLOOR, BUILDING 5 - SOUTH UNIT - ARDEN

1,492 SQ. FT.

MK.6 SCALE: 1/8" = 1'-0"